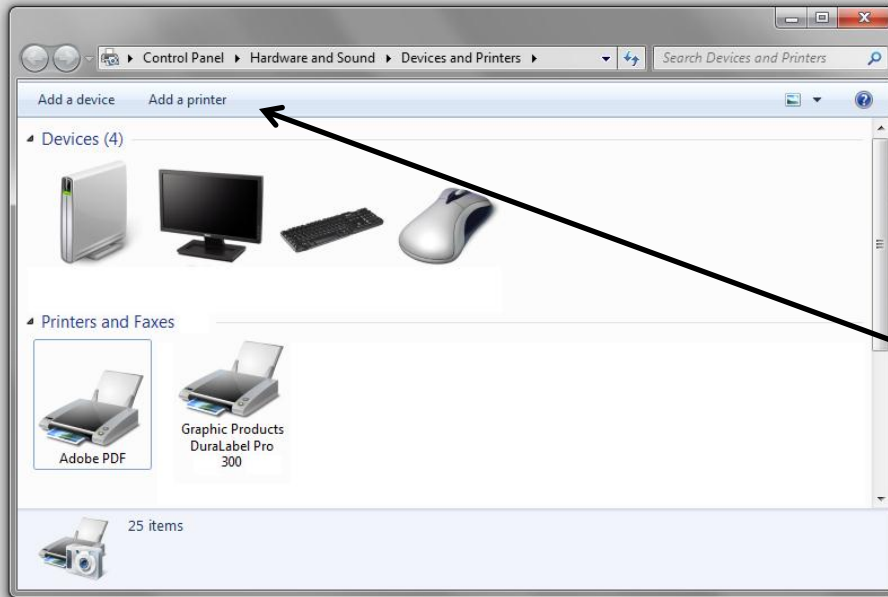


Installing Our
Drivers On
Windows 7 64-Bit

Getting Started

- **Make sure your supplies are loaded properly and the printer is turned on and connected directly to your PC's USB port.**
- **If the printer is ready it will display a GREEN light. If the printer is displaying a solid or blinking RED light then it will not print.**
- **Insert your DLP/DLP300 driver CD into your PC and close out of the autorun menu if it pops up.**
- **If you get a windows logo verification notice choose "Continue Anyway".**
- **If at any time your computer asks you to use the existing driver or replace it with a new one make sure you choose to use the new one.**
- **If you are missing your CD please call for a replacement.**

STEP 1

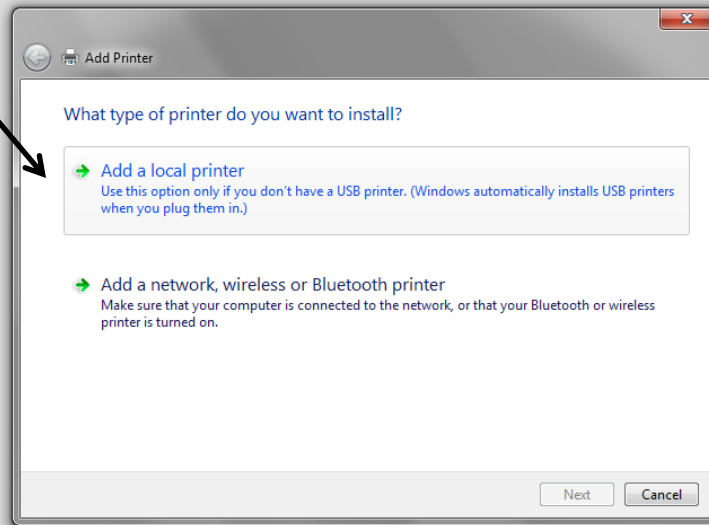


**Click on your start button
and open your
Devices and Printers**

Choose Add a printer

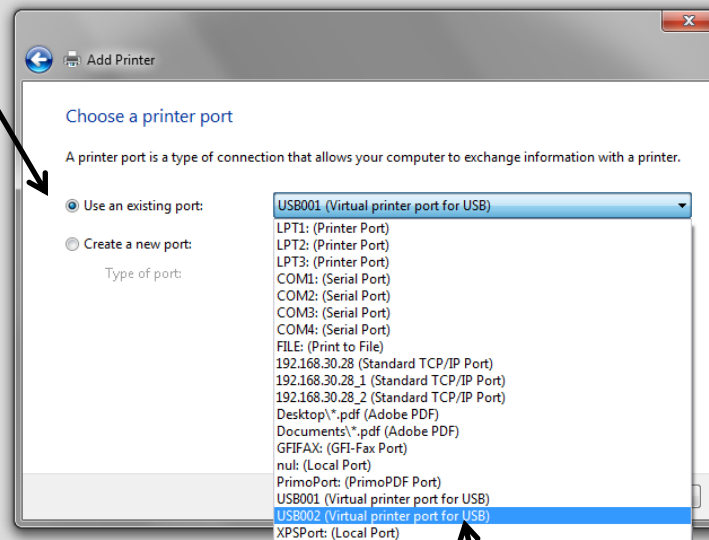
STEP 2

Select Add a local printer



STEP 3

Choose Use an existing port

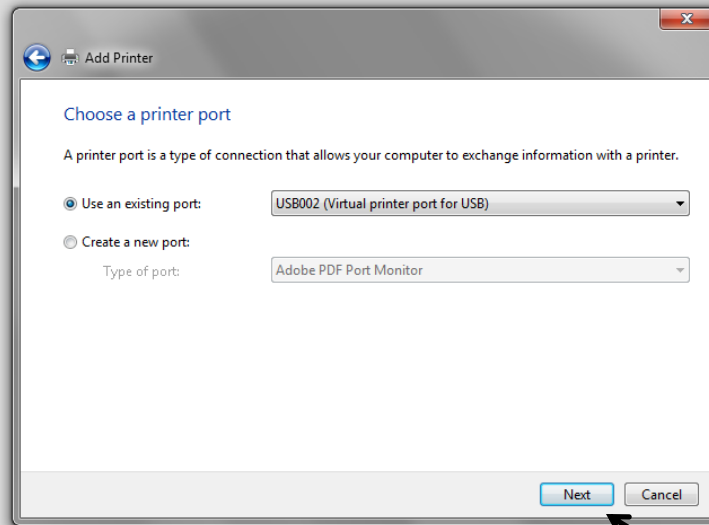


Select the highest USB port to start

It can be changed later if needed

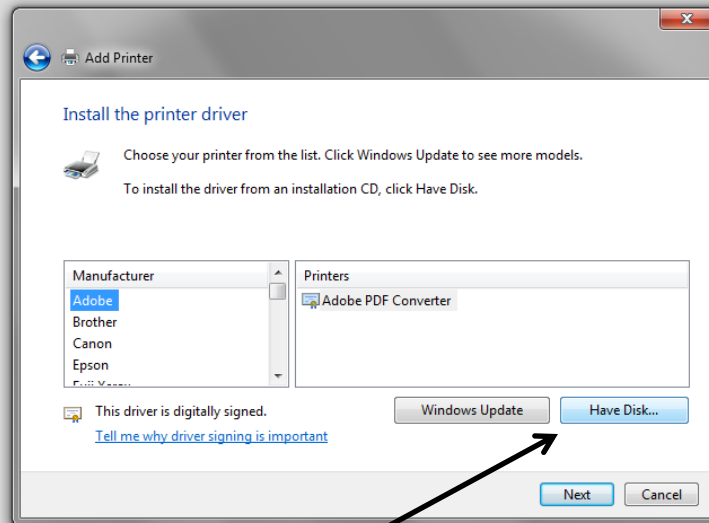
If USB001 is your only option then choose that

STEP 4



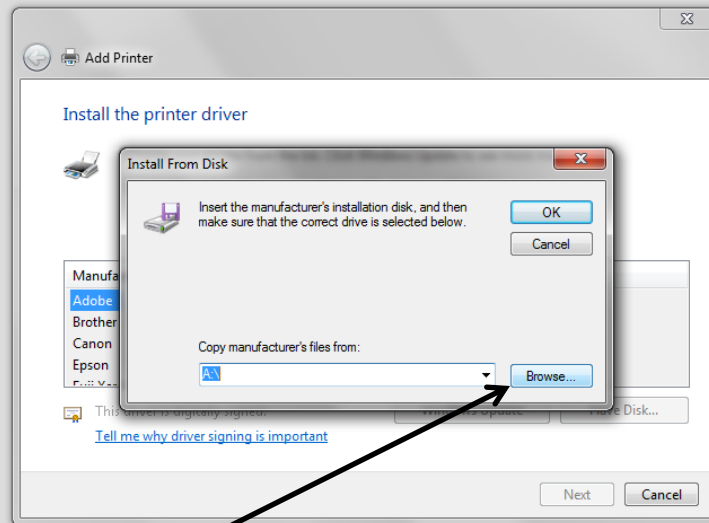
With your USB port selected choose Next

STEP 5



Choose Have Disk...

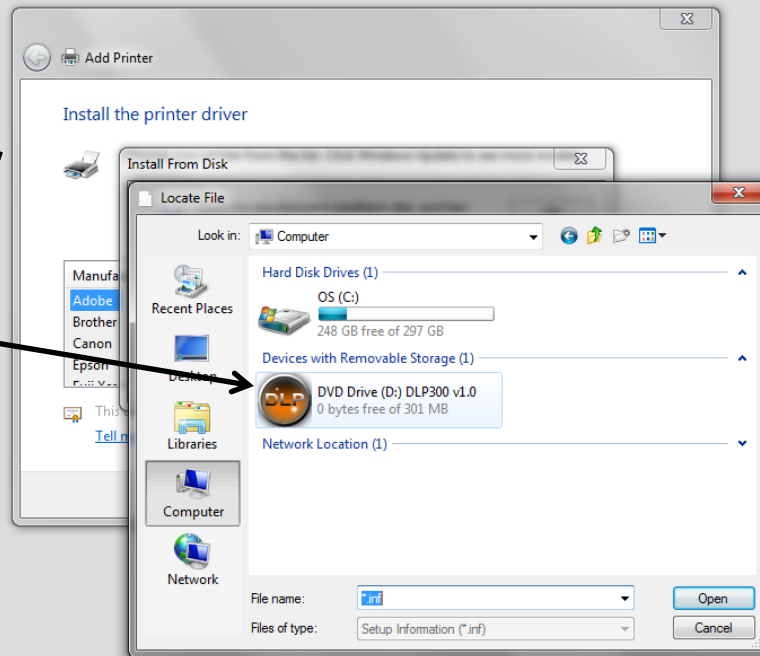
STEP 6



Click Browse...

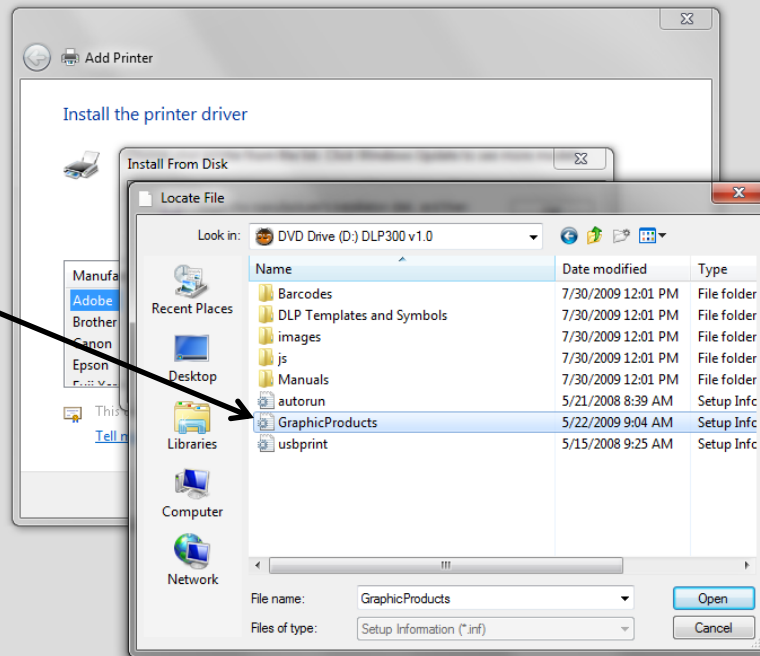
STEP 7

Click on Computer and open your CD/DVD Drive

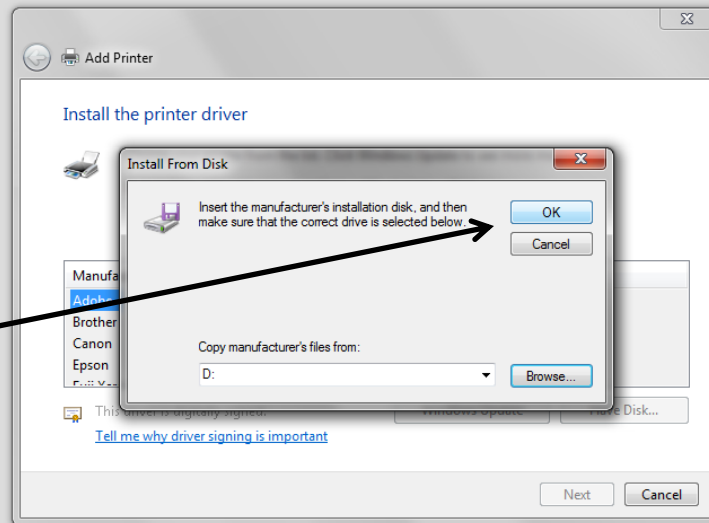


STEP 8

**Double-Click
on the file called
GraphicProducts**



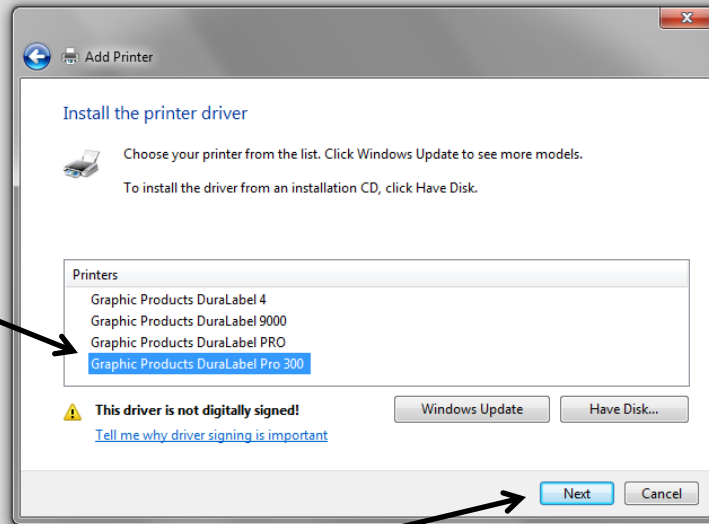
STEP 9



Click OK

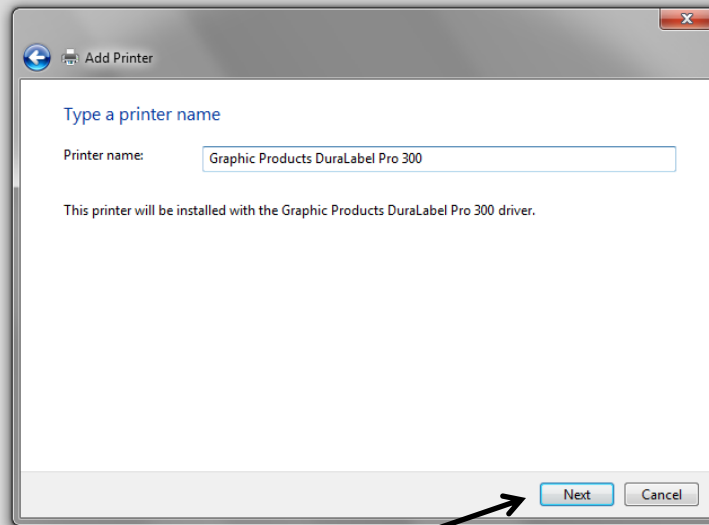
STEP 10

Ensure the proper printer is selected



Click Next

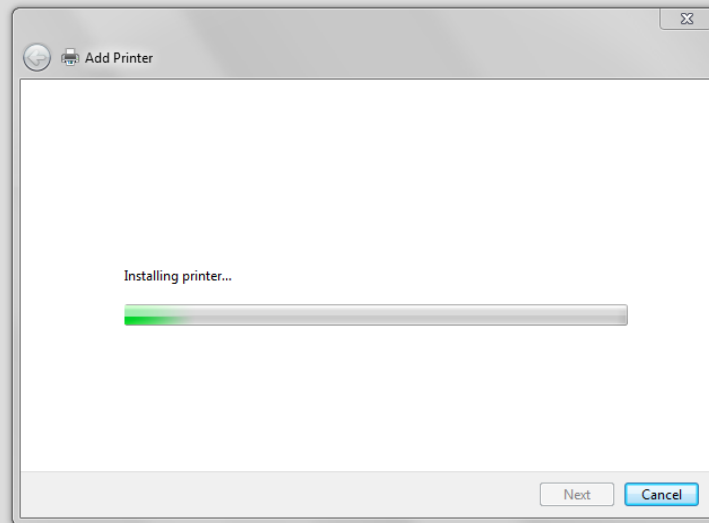
STEP 11



Click Next Again



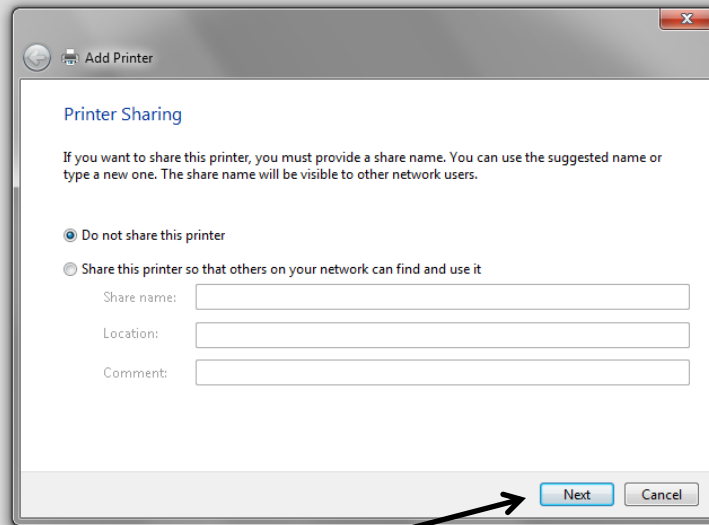
STEP 12



Wait for the installation to complete

STEP 13

**Select Do not
Share this printer**



Add Printer

Printer Sharing

If you want to share this printer, you must provide a share name. You can use the suggested name or type a new one. The share name will be visible to other network users.

Do not share this printer

Share this printer so that others on your network can find and use it

Share name:

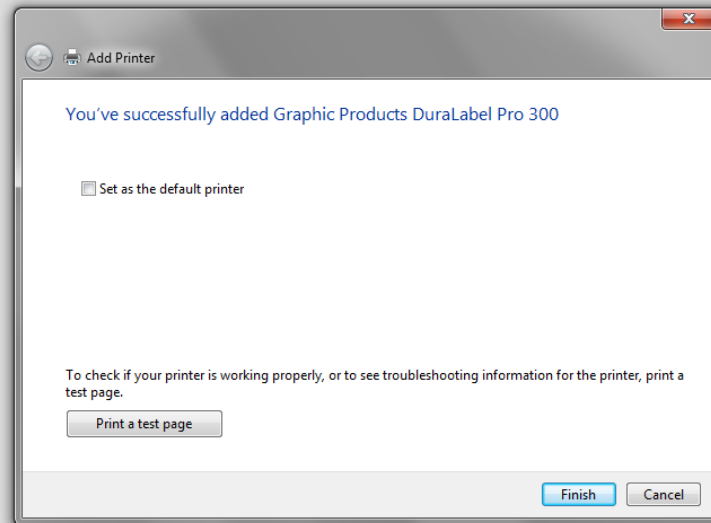
Location:

Comment:

Next **Cancel**

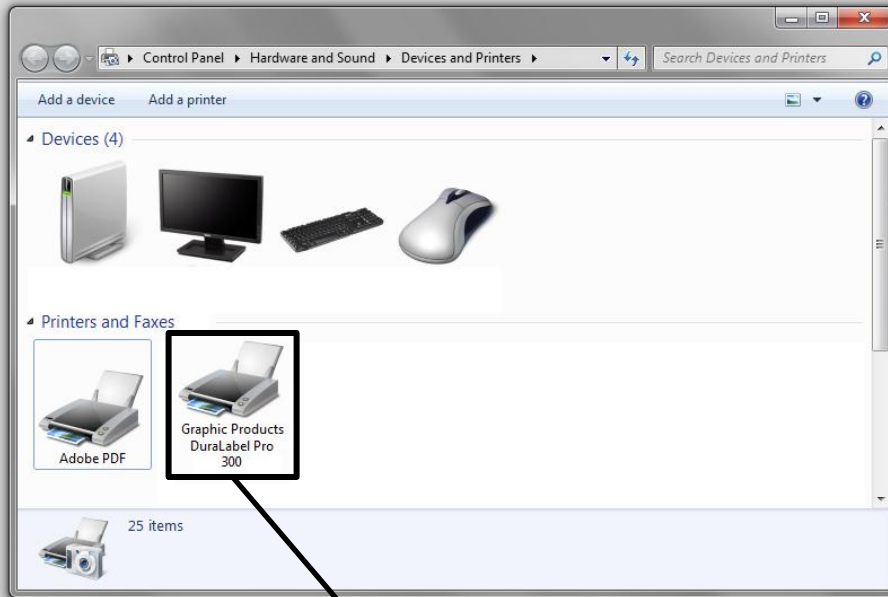
Click Next

STEP 14



Installation is complete, click Finish

Confirmation



To confirm your driver was installed correctly open your Devices and Printers and make sure you now have an icon for your DuraLabel Printer